



CARE FOR YOUR WINDOWS

Fast,  
Precise,  
Outstanding  
Value.

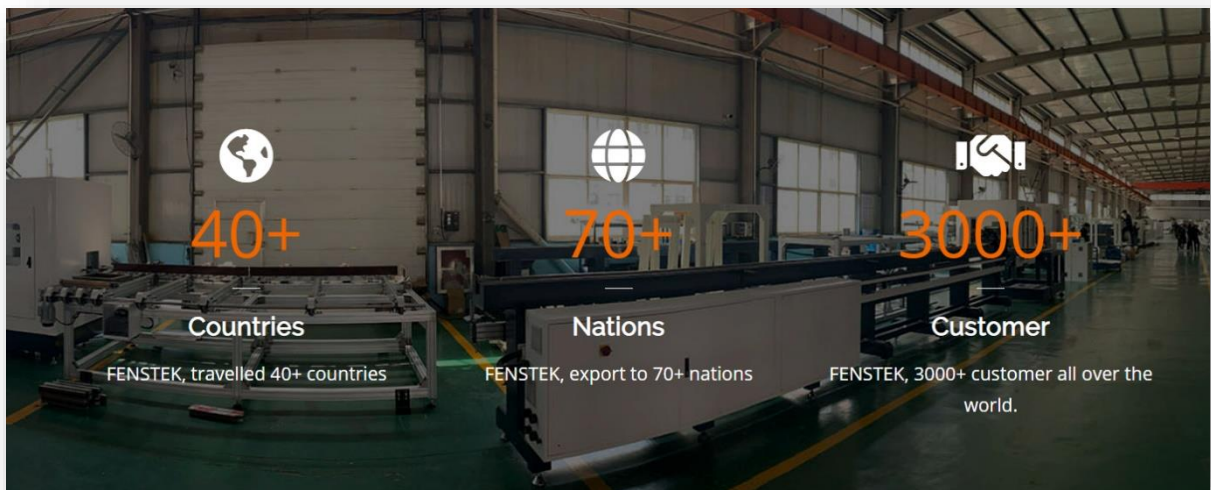
**CNC Router CMC3 1200**  
Fast, precise and outstanding value



CARE FOR YOUR WINDOWS

The fast, flexible and efficient way  
to Rout Aluminium profiles

**FENSTEK: Over 20 years CNC  
experience**



**Company profile Video:**

[FENSTEK upvc and aluminium window machinery company introduction - YouTube](#)

**Quality Control Video:**

[FENSTEK upvc and aluminium window machine quality control - YouTube](#)



[www.ledamachinery.com.au](http://www.ledamachinery.com.au)

All features and  
product specifications subject to change  
without notice

## CNC Router CMC3 1200

Fast, precise and outstanding value



### CMC3 1200 Machine VIDEO

<https://www.youtube.com/watch?v=GZdsluf8n8Q>

<https://www.youtube.com/watch?v=qssjDJrM3jM>

Also available with a 4<sup>th</sup> axis rotation of the workpiece to all intermediate angle  
**MODEL CMC4 1200**

<https://www.youtube.com/watch?v=TB3JiSB-T4A>

### High productivity:

- Typically 5 times faster than traditional Copy Routers.
- Precise programmed positioning and easy programming of different cut-outs
- Auto programmed rotation of profiles to +90 / 0 / -90 degree



[www.ledamachinery.com.au](http://www.ledamachinery.com.au)

All features and product specifications subject to change without notice

## CMC3-1200

### Aluminium Window CNC Copy Routing Machine

#### Key Features:

1. Advanced industrial CNC 3-axis profile machining system.
2. Suitable for Aluminium, PVC, and other light metal material processing;
3. The machine completes milling, drilling, grooving and other multi-functions precisely at one time.
4. Worktable with pneumatic auto rotation positioning of profiles -90°/0°/+90°
5. High precision ball screws to ensure smooth motion, positioning and processing in high precision in Y and Z axis. Fast, accurate X positioning via rack and pinion.
6. The operating platform: Linux. High resolution, easy programming
7. The latest version of the system: 4-core 4G memory, fast & smooth operation.
8. Additional 1500mm Support table for special long profile processing.
9. 400mm height safety cover auto up/down with work sequence.



# CNC Router CMC3 1200

Fast, precise and outstanding value



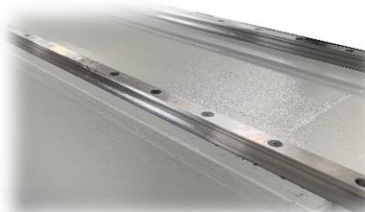
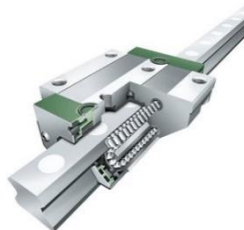
## DESIGN IN DETAIL:

### The best drives and guides

Ball screw Y and Z and rack and pinion X drives

Helical rack and pinion in X ensures rack teeth are always engaged fully. This delivers smooth acceleration and deceleration, increased accuracy with significantly reduced vibration.

Twin widely spaced linear guides for precise and quiet positioning in all Axis and safety fence travel



### Quality electrics and pneumatics

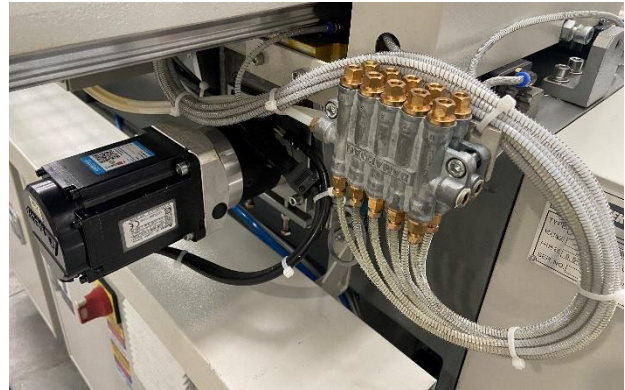
Delta Servo drives and motors. Schneider electrics and powerful cooling fans.



**CNC Router CMC3 1200**  
**Fast, precise and outstanding value**



**Centralised lubrication of the Axis guides – timed and automatic!**



**Powerful 3.5 KW Electro Spindle**  
 Programmed RPM to 18,000 to suit cutters and materials



*Cover removed in this picture >*



**CNC Router CMC3 1200**  
Fast, precise and outstanding value



**Clever and sturdy end-stop**



Workpiece stop automatically 'zeros' at commencement of cutting. You then have 1500mm of offset capacity to handle your oversize workpieces.

***Simple, effective, quick!***

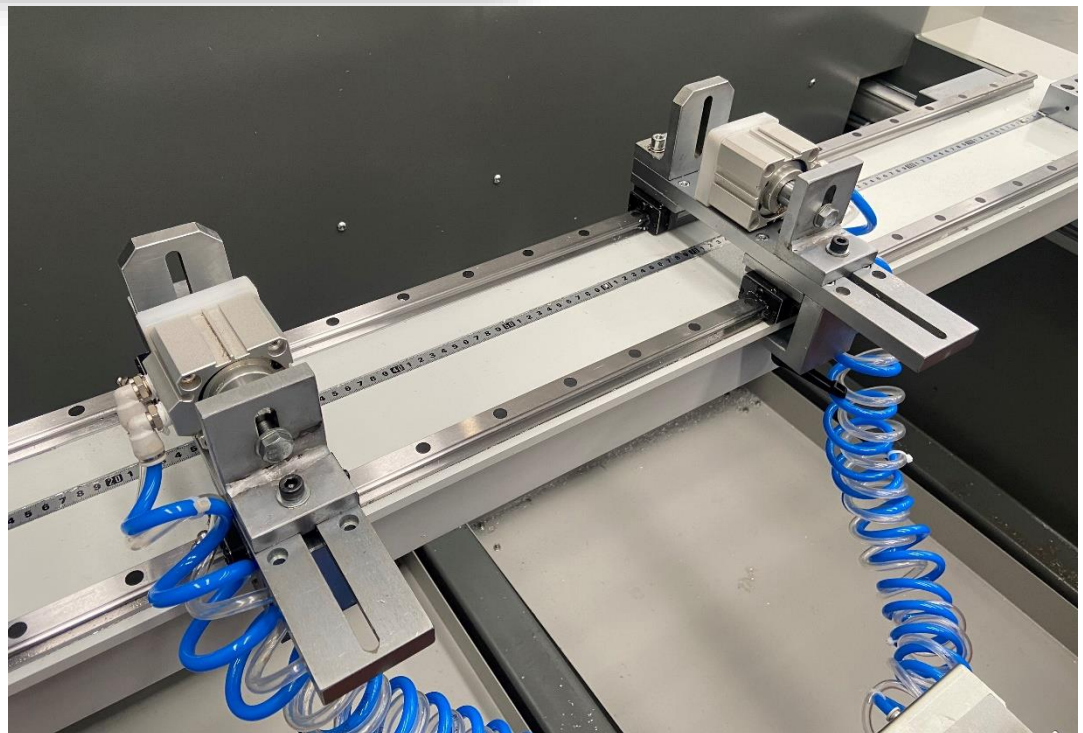


**CNC Router CMC3 1200**  
Fast, precise and outstanding value



**Extra sturdy clamps too!**

Mounted on a precise and very sturdy steel fabricated Beam and positioning very easily thanks to the THK twin guides.



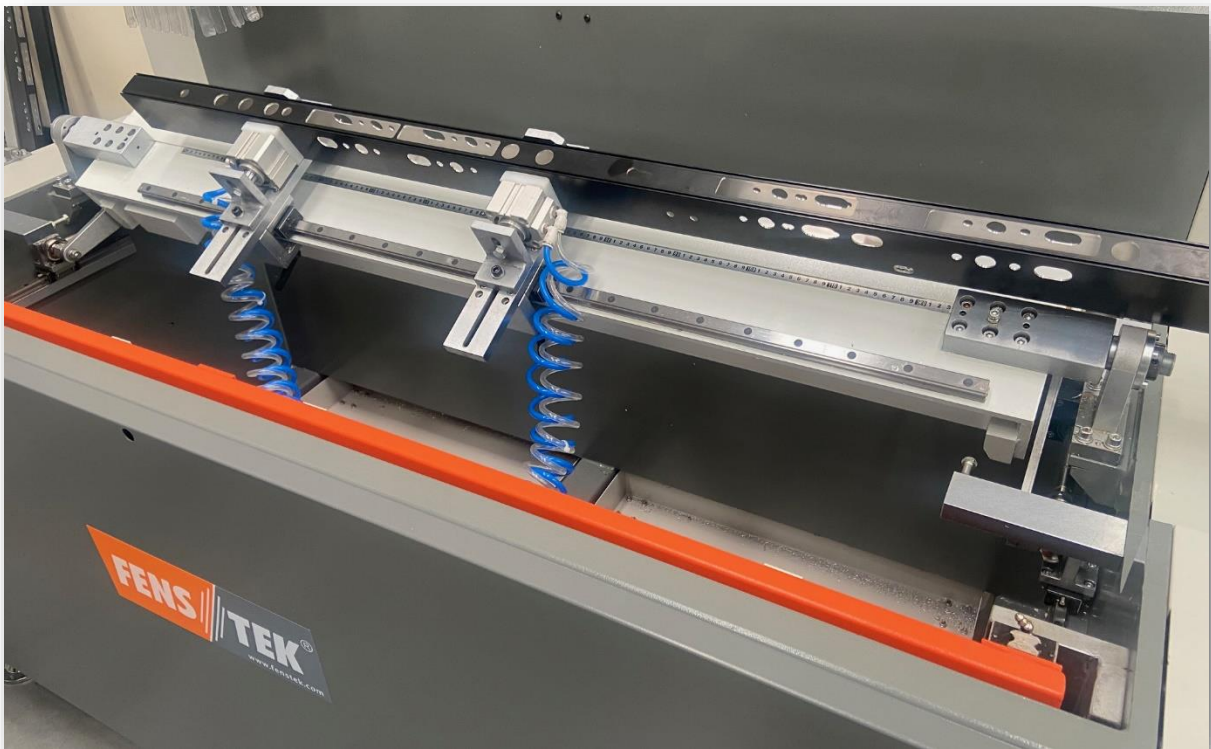


**CNC Router CMC3 1200**  
Fast, precise and outstanding value



**Auto rotation of the workpiece – easy to +90 / 0 and -90**

Fast, precise pneumatic workpiece rotation – from a program or from the ‘manual’ program on the touchscreen



**CNC Router CMC3 1200**  
Fast, precise and outstanding value



Simple programming, clear graphics.



16" High resolution 'touchscreen'

Easy positioning of screen to suit operator.

**Programming Video:**

<https://www.youtube.com/watch?v=tM8eSYQGizk>



Recall a program, Manual setting screen, Easy parameter setting etc.'



*Crisp graphics, intuitive 'touchscreen' simplicity*



[www.ledamachinery.com.au](http://www.ledamachinery.com.au)

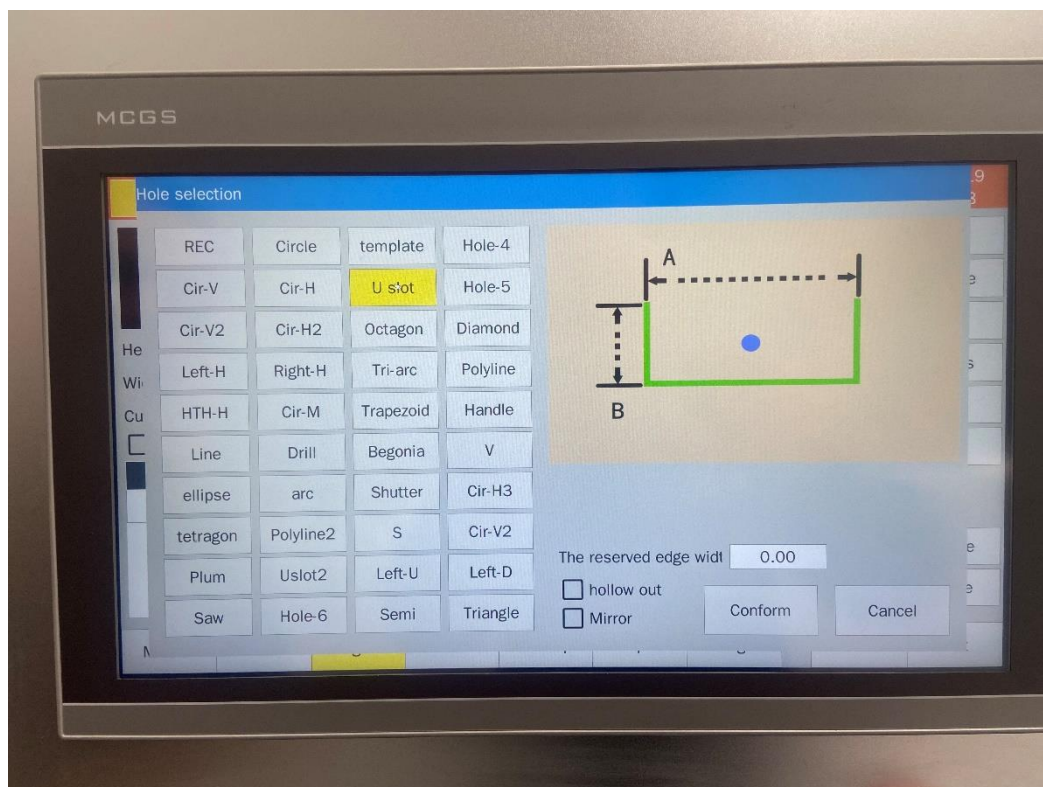
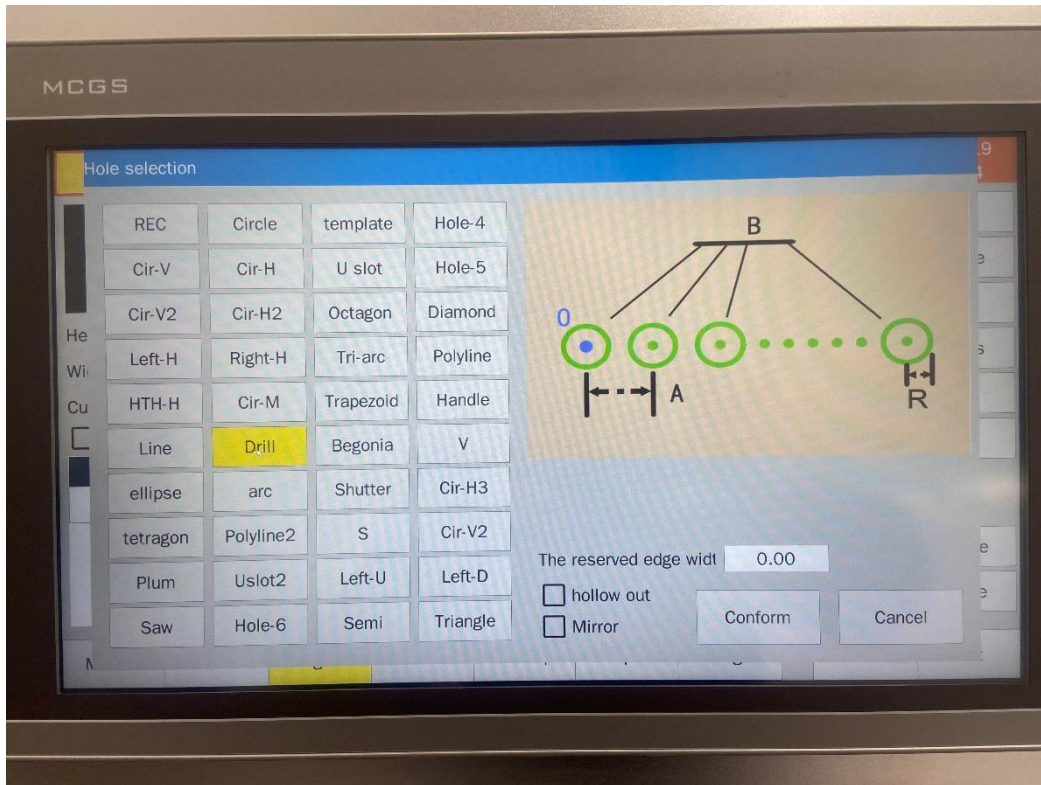
All features and product specifications subject to change without notice

# CNC Router CMC3 1200

Fast, precise and outstanding value



Helpful Programming aids - templates for shapes and hole spacings  
– simply select and set dimensions – Easier, Faster, Smarter



# CNC Router CMC3 1200

Fast, precise and outstanding value



## Built in Safety

400mm high Barrier screen with auto pneumatic action: up for machining, down for load/unload

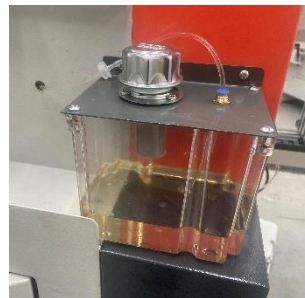


## Capacity in a small footprint

Compact Machine Size	2150*1450*2100mm
----------------------	------------------

## Small things you will appreciate.

Auto spray mist. Tool kit, air gun, Slide out Swarf collection trays, Powerful cooling fans



[www.ledamachinery.com.au](http://www.ledamachinery.com.au)

All features and product specifications subject to change without notice

**CNC Router CMC3 1200**  
**Fast, precise and outstanding value**



Power	Three phase
Working Pressure	0.6-0.8MPA
Total Power of Machine	6.5 KW
Air consumption	100L/min
Router speed	Variable to18000 rpm
Main Spindle Power	3.5KW
X-axis Travel	1200MM
X axis feed rate	0-30M/min
Y-axis Travel	320MM
Y axis feed rate	0-30M/min
Z-axis Travel	300MM
Z axis feed rate	0-30M/min
Machine Size	2150*1450*2100mm
Weight	800KG
Processing range (+90)	110*110mm
Processing range (0 degree)	170*120mm
Processing range (-90)	110*110mm
Rotated angle	Inside and outside 90°

Switching Mode Power Supply	Delta / Schneider
Servo motor & Drives	Delta (Taiwan)
Low voltage electrical apparatus	Schneider
Cable	Shielding / high flexibility
Spindle motor	JST ER32Collet
Cylinder	AirTAC (Taiwan )

