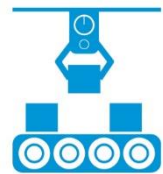




**METEOR 'UP-CUT' Mitre saws**  
**Model 420 and 500**

**60.000**

PRODUCTION CAPACITY



**43**

PARTNERS WORLDWIDE



**100**

EXPORT COUNTRIES



Accurate, efficient user friendly and outstanding value...

See it in action: METEOR VIDEO



**2 BLADE DIAMETERS: 420 and 500mm**

shutterstock.com • 1213282954

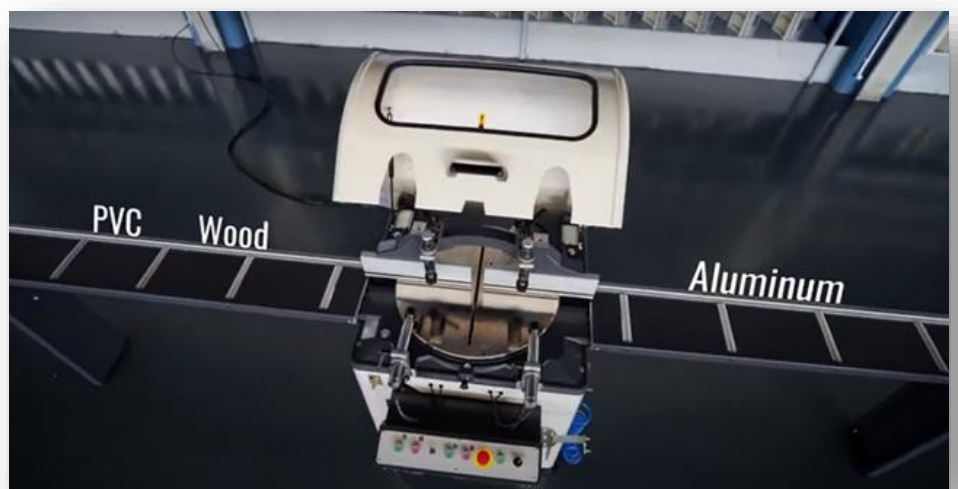
## Key features

- Hydro-Pneumatic cutting process
- Safe cutting ensured by 'two handed' cut activation and door sensors
- Cutting speed adjustment based on the profile
- Cutting at any desired angle between -90° and +45°
- Cutting at -67.5°, -45°, -30°, -22.5°, -15°, 0°, 15°, 22.5°, 30°, 45° right and left fixed angles
- Increase in cutting capacity with mobile mitre
- Pneumatic vertical and horizontal clamps
- Quiet, precise and safe 'upcut' action

### Standard Equipment

- TCT saw blade (**and a spare TCT blade**)
- Spray mist system

**265-278kg**



All features and product specifications  
subject to change without notice

# METEOR UPCUT MITRE SAW



All features and product specifications  
subject to change without notice

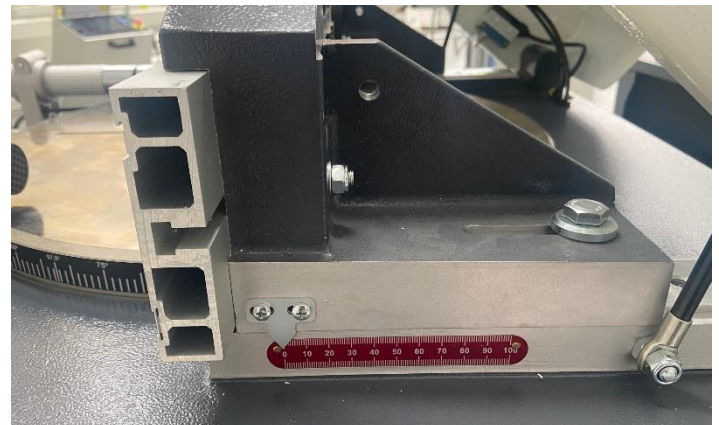
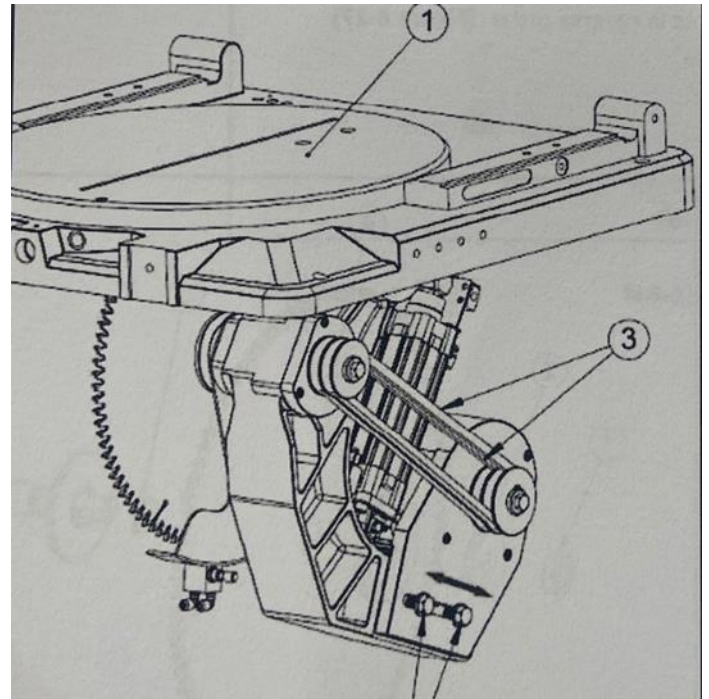


## Cutting Precision starts here:

Cast pivot and cutting table

Precise angle locking

Rock solid fences



All features and product specifications  
subject to change without notice

## Efficient motor > energy efficient.

CE standard power efficient 3kw motor

## Solid, accurate, reliable

Safe, reliable and constant 'air over oil' feed

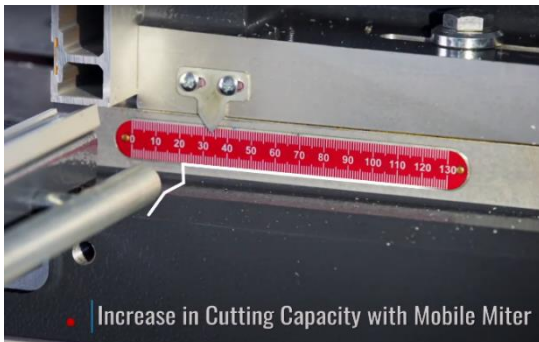
'Double acting cylinders – air in /out action not spring return

Auto mist spray lubrication

Multi section drive belts eliminate slippage under load.



## You're in control



All features and product specifications subject to change without notice

## Coolant reservoir is external

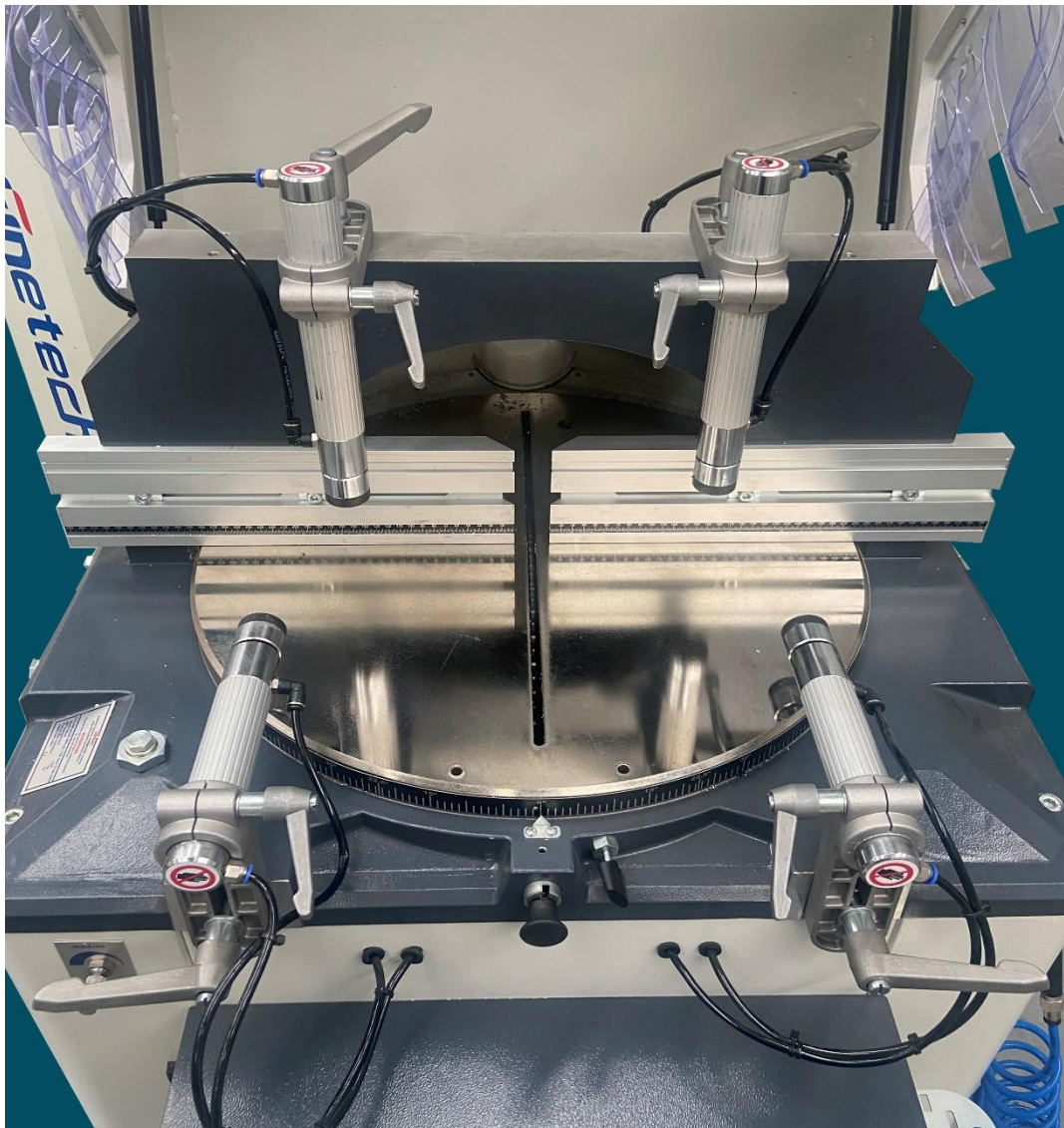
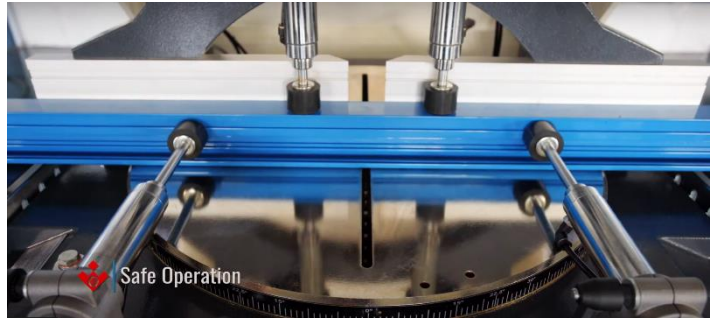
– easy to see, easy to refill. Coolant volume can be set from the control panel

## Rock solid clamping

4 auto clamps > 2 horizontal, 2 vertical

Adjustable height and entry angle

Kip clamps make repositioning fast and easy

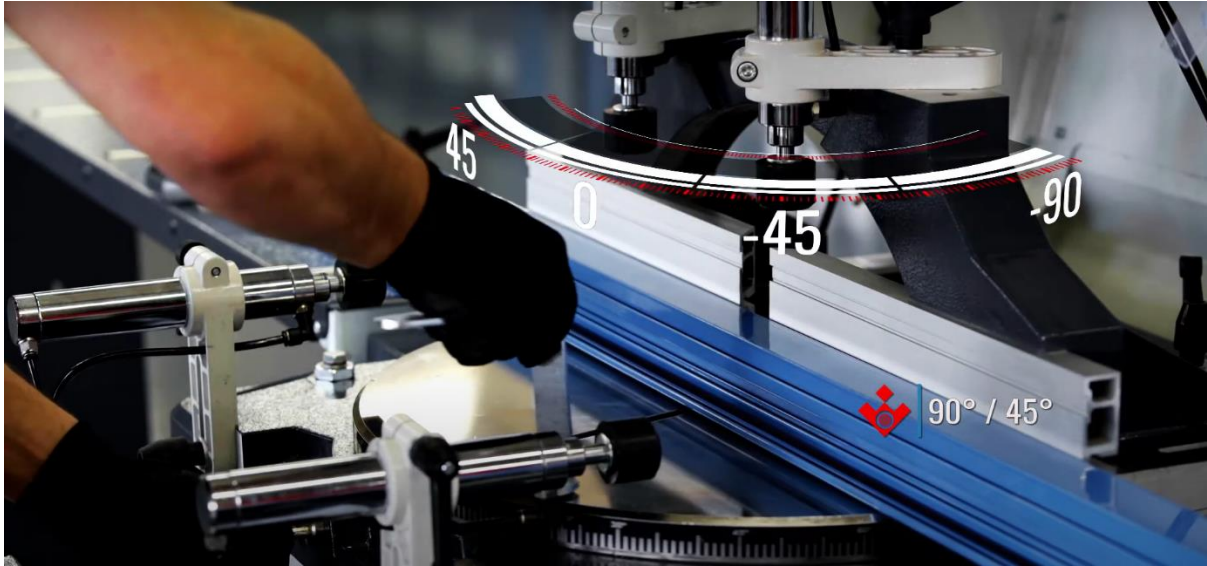


All features and product specifications  
subject to change without notice

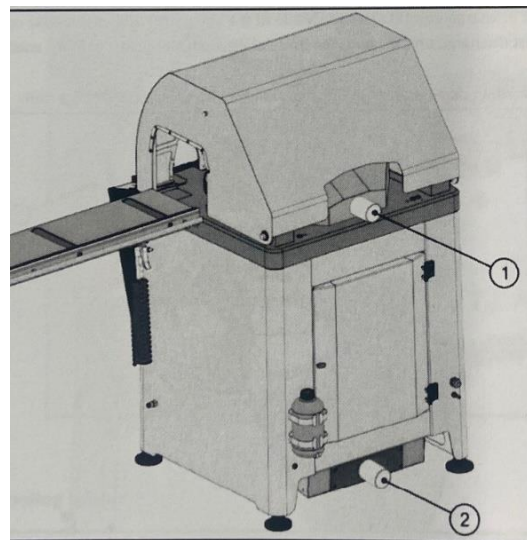
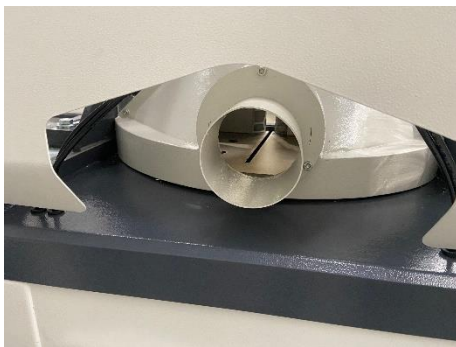
## All angles...

### Quick Indexing

- Cutting at  $-67.5^\circ$ ,  $-45^\circ$ ,  $-30^\circ$ ,  $-22.5^\circ$ ,  $-15^\circ$ ,  $0^\circ$ ,  $15^\circ$ ,  $22.5^\circ$ ,  $30^\circ$ ,  $45^\circ$  right and left fixed angles



- **Waste handling is efficient**
  - Twin 100mm rear extraction ports
  - Bottom port is connected to a large swarf collection tray.



i

# METEOR UPCUT MITRE SAW



## Safe and effective

Double button cut cycle activation.

At hand Emergency stop and pad-lockable main switch.



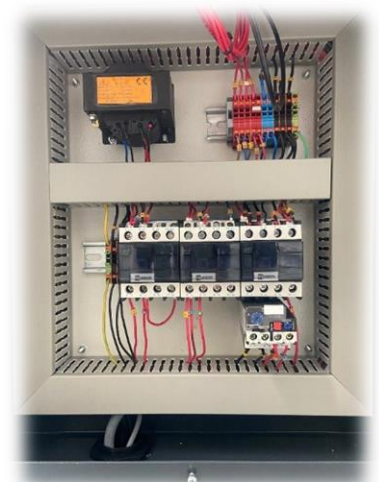
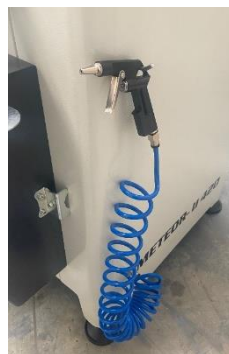
Fully enclosed overhead hood



## Quality electrics.

Components and wiring to CE standards

## Attention to small details...



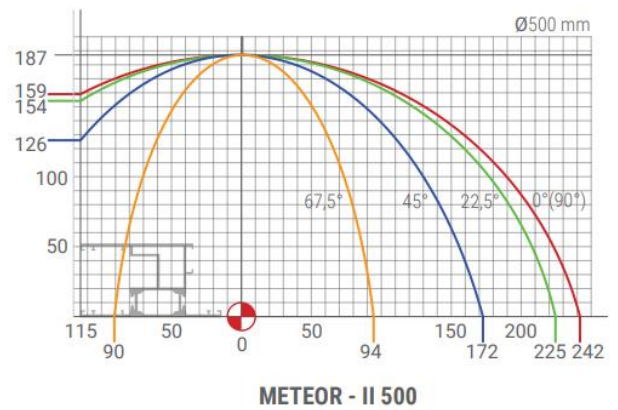
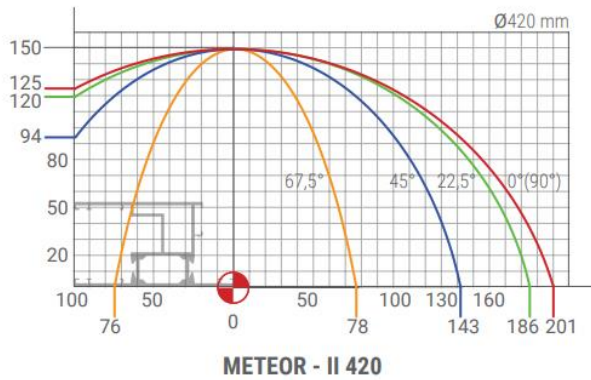
All features and product specifications subject to change without notice



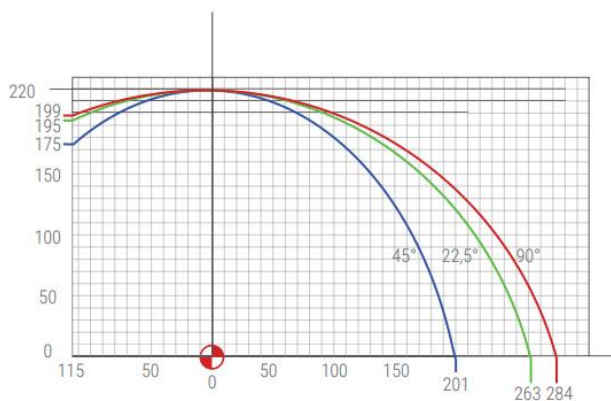


# METEOR UPCUT MITRE SAW

## Big cut capacities



## ALSO AVAILABLE : Meteor 600



All features and product specifications  
subject to change without notice

## METEOR UPCUT MITRE SAW

**Well  
supported  
(optional)**

Optional : Sturdy  
3000mm roller table  
and twin wall stop



**Backup and Service for peace of mind**



12-month comprehensive  
Warranty

Experienced Sales advice and  
after sales Service from LEDA

Spare parts inventory on-hand



Check out the full OZ-MACHINE range for Aluminium Profile processing.

[https://www.ledamachinery.com.au/product\\_category/aluminium/](https://www.ledamachinery.com.au/product_category/aluminium/)

OZ-MACHINE Company profile

<https://youtu.be/-hgLXDPwDCI>

All features and product specifications  
subject to change without notice