



Rail and Pod CNC



6410C



6516C



Rail and Pod CNC's Strong, Precise and Outstanding value



KDT – An introduction:

KDT are a major manufacturer of panel-based machinery with over 20 years of technical knowledge and experience. They export successfully to all major world markets a comprehensive range of Edgebanders, Beamsaws, Panelsaws, Flow through production lines, CNC routing and Drilling machines. Annual production exceeds 19,000 machines

Click here and take a look...

<https://www.youtube.com/watch?v=xoqp9XiLNds&t=10s>

KDT machines are built to work hard and designed to last.



www.ledamachinery.com.au
All features and product specifications subject to change without notice



Rail and Pod CNC's
Strong, Precise and Outstanding value

Model 6410C

3250 X 1250 X 200mm capacity



Model 6516C

5150 X 1500 X 200mm capacity





Rail and Pod CNC's Strong, Precise and Outstanding value

DESIGN IN DETAIL:

Machine Frame.

A CNC relies on the strength and rigidity of its frame

KDT machine frames are CNC welded and carefully heat treated to relieve any welding stress, then precision machined on a 5-axis machining centre to guarantee the accuracy of the bed and stability of the guide rails

Robotic welding. The strength depends on the accuracy and stability of welding. The robot produces high-precision welding, evenly

connecting the parts without overheating the seam.

Guarantee of the quality of welded joints.

The welded frame and bed are **Annealed:** relieving internal stress, hardening, preventing deformation and increasing the reliability of welds. The bed is heated up to 590 ° C and then slowly cooled, which stabilizes the metal

Annealing is a costly process as a large amount of electricity is consumed and the production period is increased. KDT remain true to traditions and fundamental scientific principles.

After annealing, the bed is **sandblasted**

In addition to cleaning contaminants and knock removing the oxides of the metal itself > prepared for the application of paint.

The whole is always more than the simple sum of its parts!

Each KDT machine test runs at idle for 10 to 12 hours. Engineers carefully check the operation the interaction of components and issue a certificate of completion

This construction is normally reserved for far more expensive CNC's and is fundamental to accuracy and long-life precision



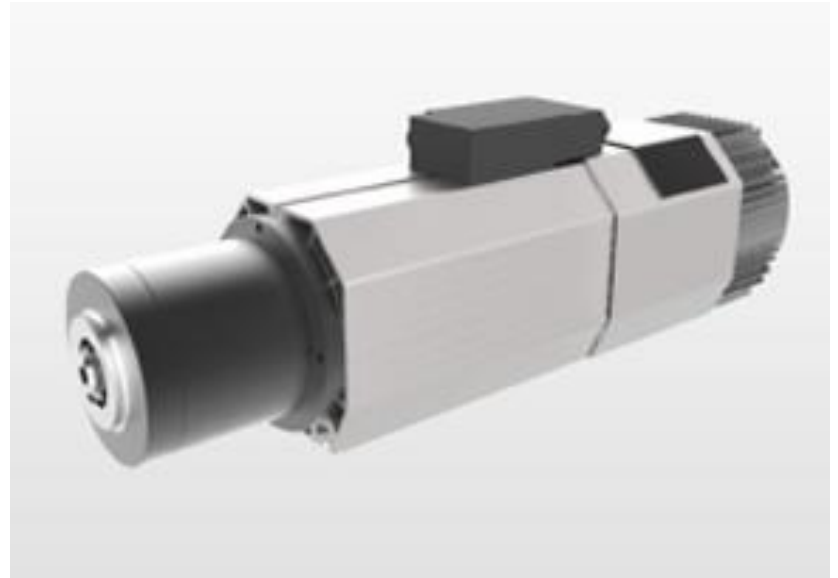


Rail and Pod CNC's Strong, Precise and Outstanding value

Powerful 13.2kw Electro Spindle

KDT'S use the well proven HSD Italian 13.2 KW air cooled Electro Router spindle which has step-less Inverter control to 24,000 rpm.

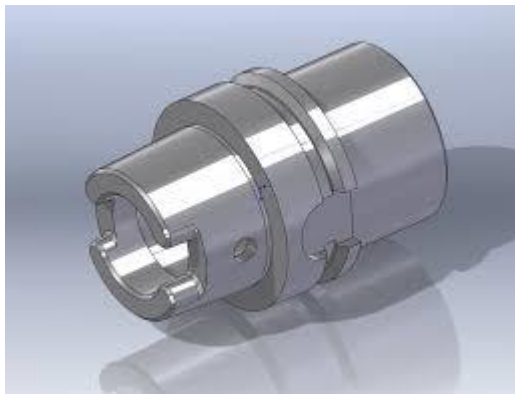
You always have the correct rotation speed for the optimum routing result.



High precision Tool holders

To guarantee Routing precision the extra rigid / precise HSK63 Tool holder system is fitted.

8 Tool holders and collets are included





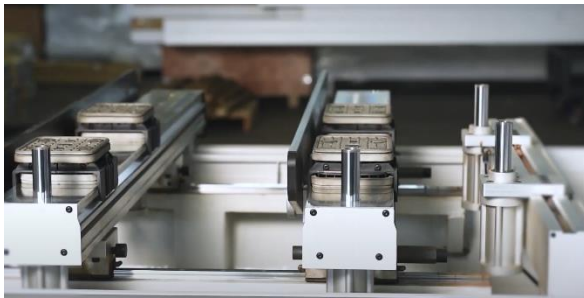
Rail and Pod CNC's Strong, Precise and Outstanding value



Pod and Rail from Schmalz

German Schmalz Rails, Pods and Panel lift system is fitted

Fast, flexible loading and unloading of materials



The best drives guides and cables

The gantry is driven by powerful Delta Servo drive coupled to reduction planetary gearbox

The Y axis is driven by a Delta servo drive coupled to a reduction Gearbox.

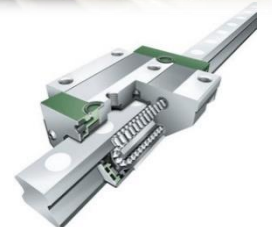
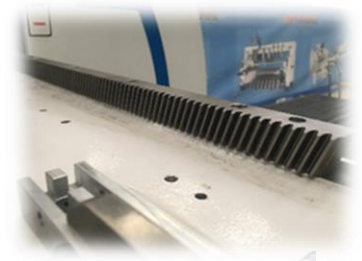
These drive the gantry and machining group along heavy duty helical rack and pinion systems with high precision Lineal guides

The helical rack and pinion system ensures rack teeth are always engaged fully and eliminate backlash. This delivers smooth acceleration and deceleration, increased accuracy with significantly reduced vibration and noise.

The guides are automatically lubricated from a centralised system in X and Y.

Separate manual Lubrication for the Z axis is included.

Reduced friction and power consumption with prolonged service life





Rail and Pod CNC's Strong, Precise and Outstanding value

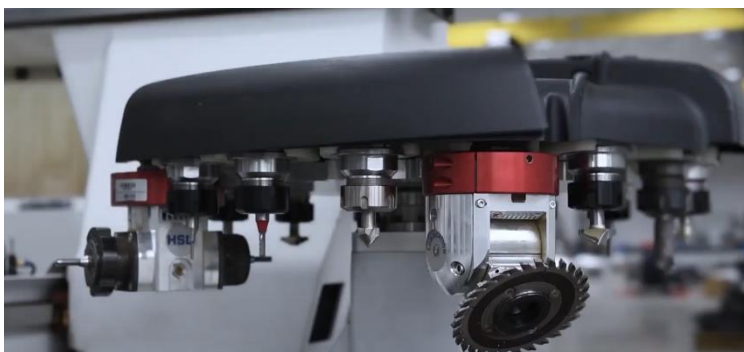


16 Tools on board and measured!

Travelling with the Gantry is a 16 station Servo drive (fast) Rotary auto tool changer supplied with 8 x F63 HSK system tool holders and collets.

The 6516c Model includes an additional 5 station Linear Tool change station

To eliminate guess work and trial cuts a tool length measuring device allows even large tools to be automatically and easily measured

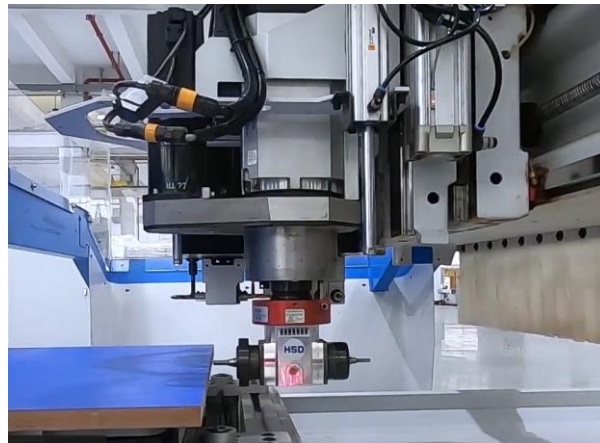




Rail and Pod CNC's Strong, Precise and Outstanding value



C Axis versatility



Strong and reliable Vacuum.

A BECKER dry vacuum pump lower maintenance costs without loss of vacuum in hot environments.

160 CMH > 6410C 244 CMH > 6516C

KDT pumps are external to the machine frame not under it. Heat build-up dissipates and maintenance is far easier, reducing costs.



www.ledamachinery.com.au
All features and product specifications subject to change without notice



Rail and Pod CNC's Strong, Precise and Outstanding value

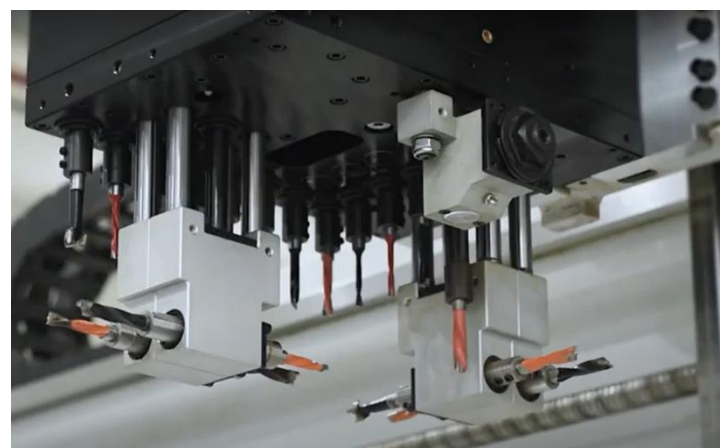
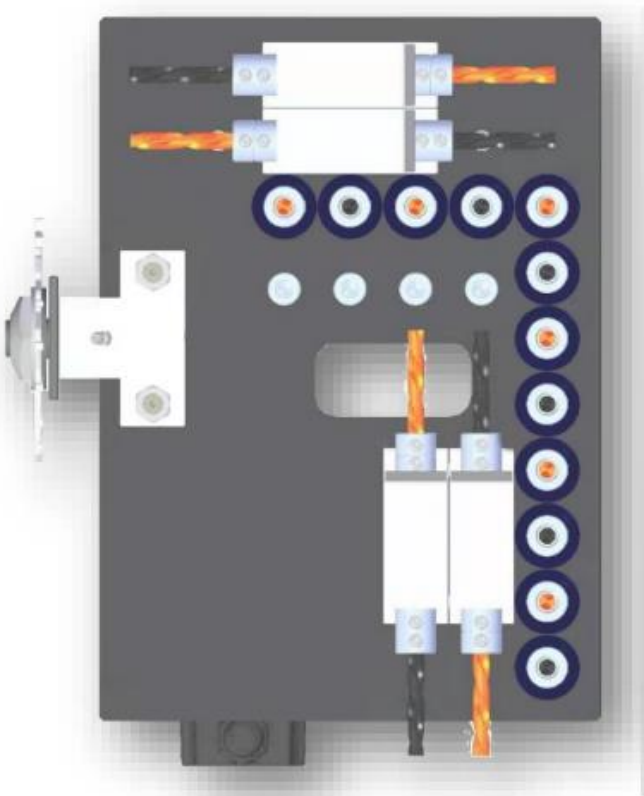


Drilling Versatility.

The 12 Independent vertical drills and 8 Horizontal make short work of your drilling, line boring and hinge hole machining. A saw unit is also included with the drill group.

8 in X and 5 in Y at 32mm spacing is both practical and versatile,

Spindles rotation at 6000rpm via a powerful motor ensures clean fast boring.





Rail and Pod CNC's Strong, Precise and Outstanding value



Waste extraction is important

KDT understand the importance of extraction that works effectively without the need for substantial extraction volumes. Removing chips and dust from working surfaces is critical to good routing results

A 200mm hood services the boring and routing heads for efficient dust extraction.
A driven belt conveyor in the machine base effortlessly removes chips and offcuts



Pendulum dual work zone. Load and unload safely while machining.

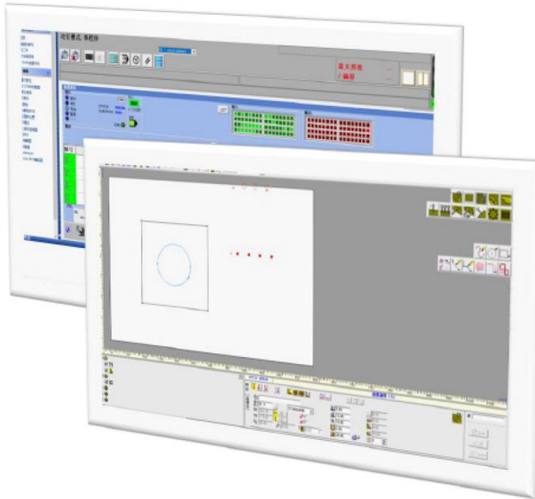




Rail and Pod CNC's Strong, Precise and Outstanding value



Operator and Machine interface > Easy



Italian TUP control system,
Integrate operation and drawing
functions in one system.

Clever handheld remote setting or activate from the mobile control console

Your fully fledged command centre



Electronic components from
trusted international
suppliers are used.



Filtered Industrial fans ensuring the sensitive Inverters, servo drives, and other
electronics are kept cool and dust free.

Essential for electronic reliability in an Australian summer.

**Control cabinet is on wheels
– very easy to position and lock down wherever suits best**



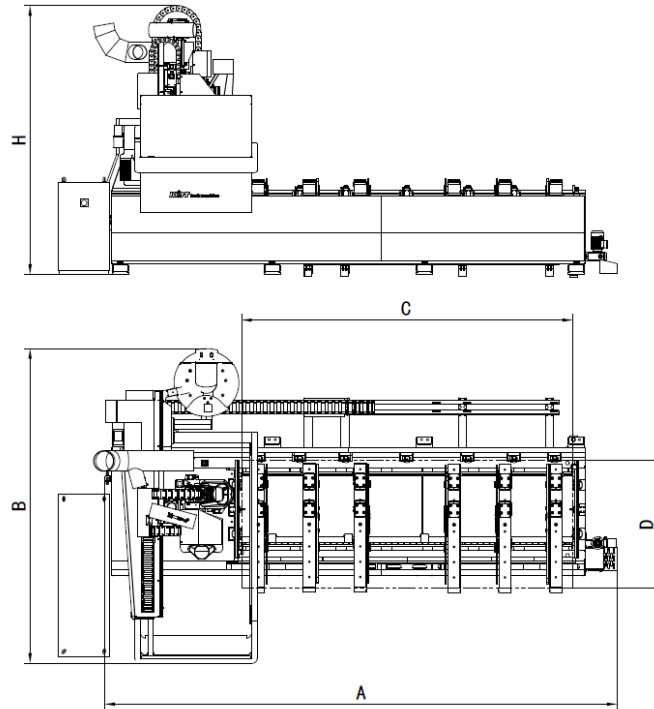


Rail and Pod CNC's
Strong, Precise and Outstanding value



You have the space.

The compact footprint of the 6410C suits smaller workshops where floor space is tight.



Model	A (mm)	B (mm)	C (mm)	D (mm)	H (mm)
KN-6410 (C)	5055	3090	3250	1250	2715

Working area of Y and X and Z

6410C 3250 X 1500 X 200mm

6516C 5150 x 1500 x 200mm

Maximum travel speed

80m/min in X

80 m/min in Y 6516C 75 m/min in Y 6410C

30m/min in Z

Capacity of vacuum pump **160m³/hr 6410C 244m³/hr 6516C**

Air cooled spindle **13.2KW kw 24,000 rpm**

Rotary / servo automatic tool change **16 tool positions (+ 5 linear on 6516C)**

Dust hood connection diameter **200 mm: 3400 cubic m/hour**

Machine weight (not including in/out feed) **5000kg 6410C 5500 KG 6516C**

Transmission for X and Y axis **helical rack and pinion**

Transmission for Z axis **ball screw**

Toolholder system **HSK F63**

Drills 12 vertical, 8 Horizontal. Saw unit included. C axis included

