

STANDARD MODELS : KD-612KSZ



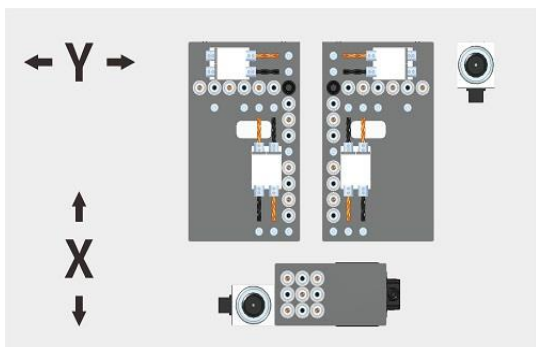
Double-drill package ,six sides NC drilling center has double-drill packages and 5 types ATC for simultaneous processing and more efficiency. Single-handed operation, small workload, can be directly connected with a variety of split software. It is mainly used for six faces (hinge holes, through holes, semi-through holes) of various kinds of artificial boards, horizontal drilling, and can simultaneously process symmetrical hole positions, also can do hogging and milling with small spindles.

- 1、 5 types ATC for spindle, easier handle hogging, milling, lamella and other craft;
- 2、 With double gripper and long guide rail , gripper max speed up to 140m/min , auto detect hole position to avoid gripper exchange time. Gripper trip up to 5.5 meter , big board can working by one time catch , reduce processing time.
- 3、 adopt double translation air flotation table , move flexibly according to the hole position to improve the drilling accuracy and avoid fouling at the bottom.
- 4、 adopt double positioning mode , more accurate and efficient positioning of different panels.
- 5、 adopt belt conveyer dust collection , centralized remove all dust which fall into machine.
- 6、 Software can simulate processing path , predict the processing time;

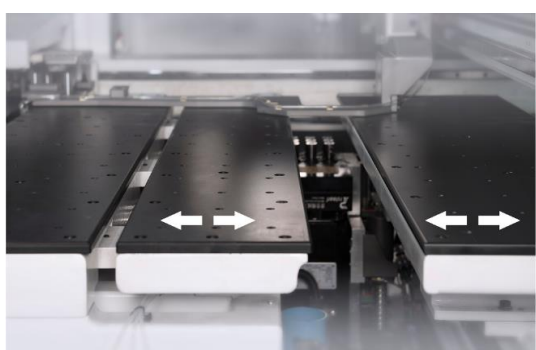


7、Processing record statistics, view production progress in real time.

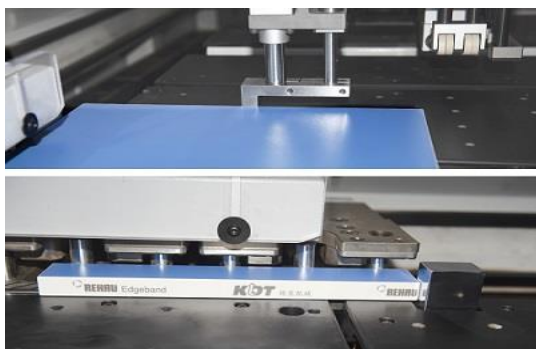
FEATURES



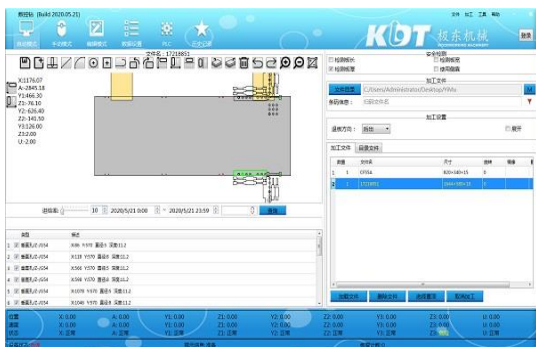
- ◆ Drill package:UP:26V+12H BOTTOM:9V



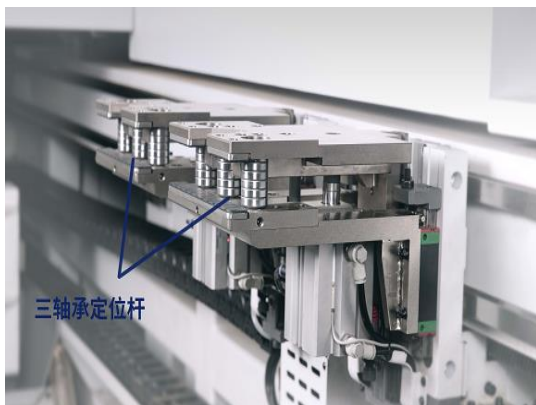
- ◆ Double translation air floatation table: can move flexibly according to the hole position to improve the drilling accuracy.



- ◆ Choose one between double positioning modes according to panel size,higher accuracy and efficiency when positioning.



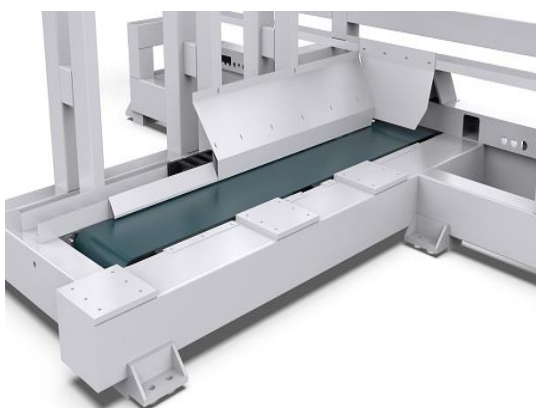
- ◆ Processing record statistics: view production progress in real time.



- ◆ Upgrade dual gripper and long guide rail, quick working with various panel holes.



- ◆ 5 type ATC, various tool available Use for hogging, milling, lamello connector working

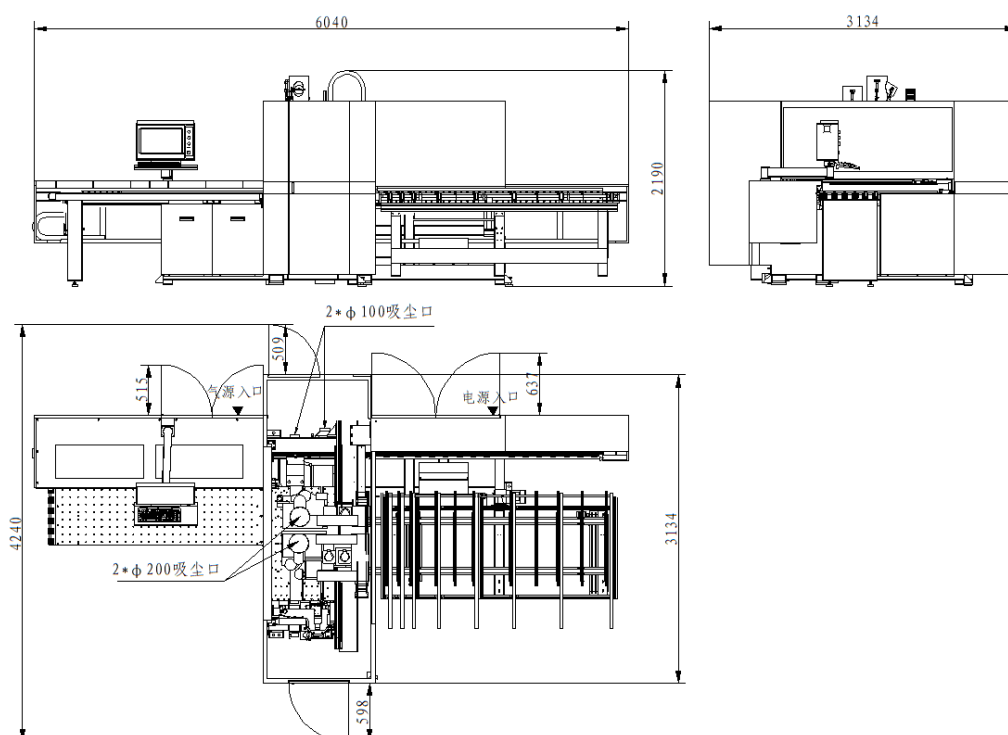


- ◆ Blet conveyer dust collection: centralized remove all dust which fall into machine.



- ◆ Simulate processing path to predict processing time.

LAYOUT DIMENSIONS



STANDARD MACHINE PARAMETERS

STANDARD MODELS	PACKAGE SIZE(X Y Z) mm			GROSS WEIGHT(kg)	POWER(kW)	Working Pressure(MPa)
KD-612KSZ	5700	2600	2350	/	28.22	0.6 MPa

STANDARD MACHINE PARAMETERS

	KD-612KSZ						
MAX SPEED(m/min)	140(x)/90(y)/50(z)						
MIN PANEL(L*W)	70*35						
MAX PANEL(L*W)	2800*1200						
Gripper moving speed	140m/min						
Y/V axis max speed	90m/min						
Z/W axis max speed	50m/min						
B axis max speed	75m/min						
C axis max speed	30m/min						
Tool quantity	Top:26(V)+12(H); Bottom:9(V)						
Panel thickness	9~60mm						
Panel width	50 ~ 1200mm; 35 ~ 50mm(L≤ 1000mm)						
Panel length	70 ~ 2800mm						
Overall size	6040L*3134W*2190H (mm)						
Dust suction	200mm*2 100mm*2						
Spindle power	Top: 5.5kW Bottom: 3.5kW						
Drill clip size	φ 10						



OPTIONS



Saw Blade(H): Drill package with saw blade, can hogging
50-850mm straight line groove