

STANDARD MODELS : KD-612KS

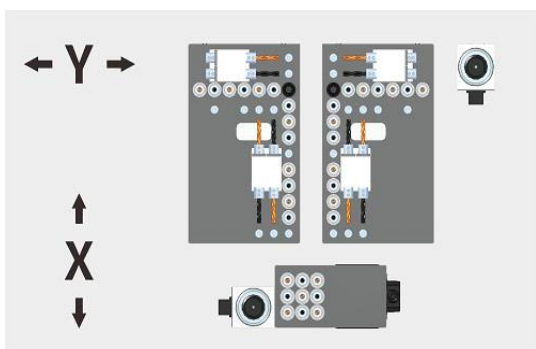
Double-drill package six sides NC drilling center has double-drill packages for simultaneous processing and more efficiency. Single-handed operation, small workload, can be directly connected with a variety of split software. It is mainly used for six faces (hinge holes, through holes, semi-through holes) of various kinds of artificial boards, horizontal drilling, and can simultaneously process symmetrical hole positions, also can do hogging and milling with small spindles.

- 1、96mm min drilling distance between 2 drill bit package during simultaneous processing
- 2、With double gripper and long guide rail, gripper max speed up to 140m/min, auto detect hole position to avoid gripper exchange time. Gripper trip up to 5.5 meter, big board can working by one time catch, reduce processing time.
- 3、adopt double translation air flotation table, move flexibly according to the hole position to improve the drilling accuracy and avoid fouling at the bottom.
- 4、adopt double positioning mode, more accurate and efficient positioning of different panels.
- 5、adopt belt conveyer dust collection, centralized remove all dust which fall into machine.
- 6、Software can simulate processing path, predict the processing time;

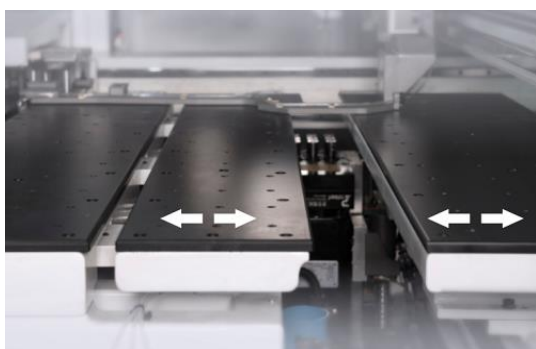


7、Processing record statistics, view production progress in real time.

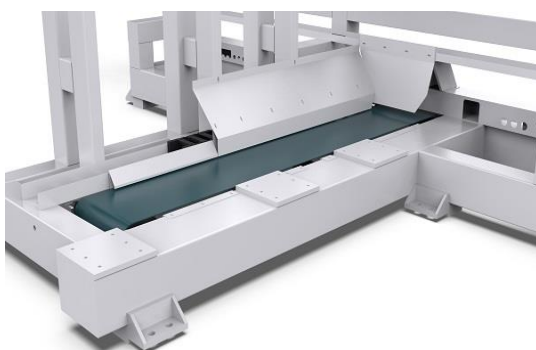
FEATURES



- ◆ Drill package:UP:26V+12H
BOTTOM:9V



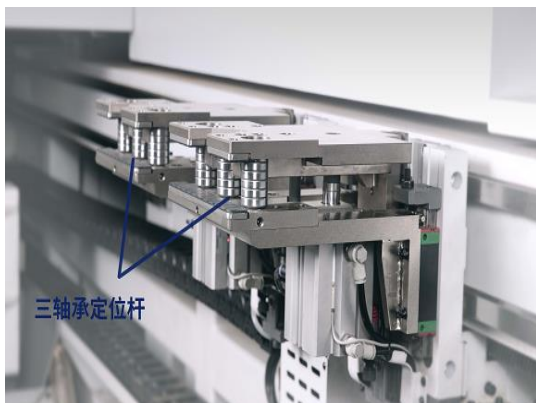
- ◆ Double translation air floatation table: can move flexibly according to the hole position to improve the drilling accuracy.



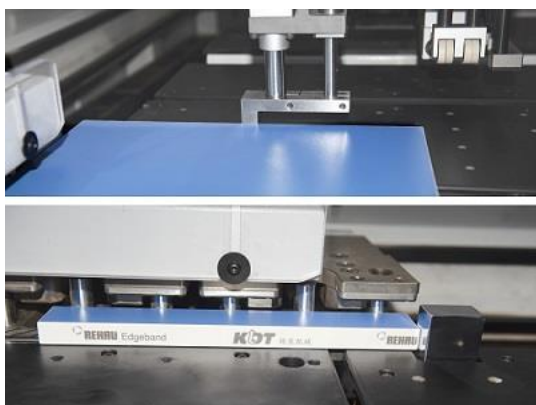
- ◆ Belt conveyor dust collection: centralized remove all dust which fall into machine.



- ◆ Processing record statistics: view production progress in real time.



- ◆ Upgrade dual gripper and long guide rail, quick working with various panel holes.



- ◆ Choose one between double positioning modes according to panel size, higher accuracy and efficiency when positioning.

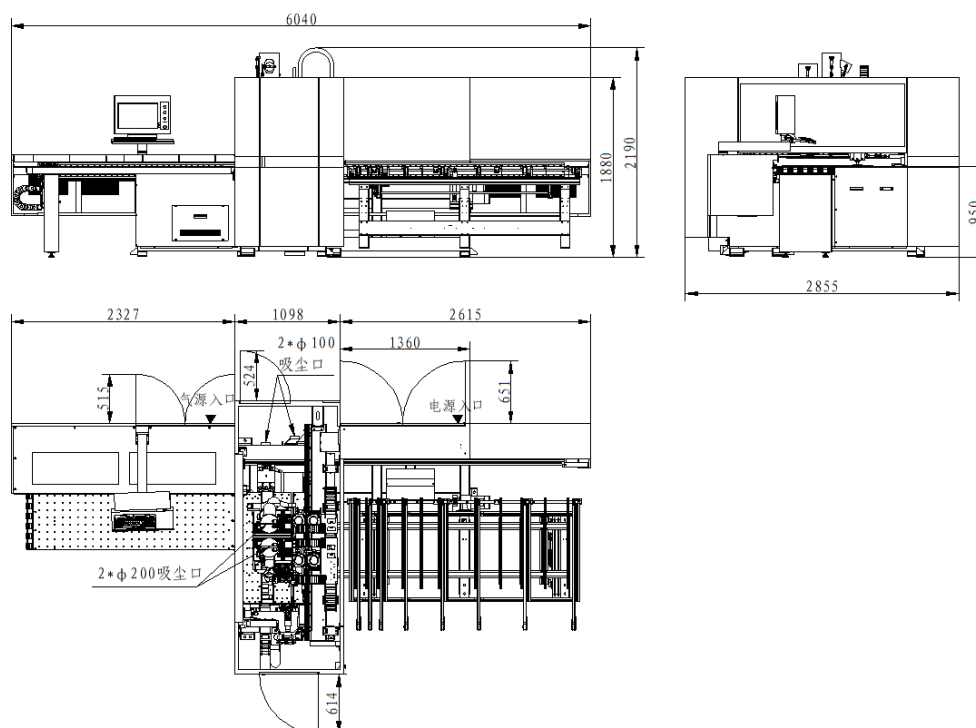


- ◆ Simulate processing path to predict processing time.



- ◆ Scan label to recognize working file(standard with scan gun)

LAYOUT DIMENSIONS



STANDARD MACHINE PARAMETERS

STANDARD MODELS	PACKAGE SIZE(X Y Z) mm			GROSS WEIGHT(kg)	POWER(kW)	Working Pressure(MPa)
KD-612KS	5700	2300	2350	*	28.22	0.6

STANDARD MACHINE PARAMETERS

	KD-612KS						
MAX SPEED(m/min)	140(x)/90(y)/50(z)						
MIN PANEL(L*W)	70*35						
MAX PANEL(L*W)	2800*1200						
Gripper moving speed	140m/min						
Y/V axis max speed	90m/min						
Z/W axis max speed	50m/min						
B axis max speed	75m/min						
C axis max speed	30m/min						
Tool quantity	Top:26(V)+12(H); Bottom:9(V)						
Panel thickness	9 ~ 60 mm						
Panel width	50 ~ 1200mm 35 ~ 50mm(L≤ 1000mm)						
Working piece length	70 ~ 2800mm						
Overall size	6040L*2855W*2190H (mm)						
Suction port	φ 200mm*2 φ 100mm*2						
Spindle power	Top: 5.5kW Bottom: 3.5kW						
Drill clip size	φ 10						



OPTIONS



Saw Blade(H): Drill package with saw blade, can hogging
50-850mm straight line groove