

GOVE LDMY Extractor Series

Designed for the Woodworking Industry



GOVE LDMY Model Extractors have been designed and specified to meet the demanding requirements of the Australian Woodworking Industry which present some unique problems:

Handle mixed dust loads

These are common where fine dust from the CNC, PVC trimmings from the Edgebander and Shavings from solid wood machines etc. are often generated at the same time.

To deal with this GOVE have the dirty air enter the extractor below the filter banks. The chamber it enters now expands in area slowing the airflow and immediately dropping the heavier waste into the bin. The fine dust then travels to the filters in an efficient spiral action

The Extended Hopper height between Inlet and Waste bin assists as it creates a 'downwards' airflow, important to prevent the dust already collected in the bin from lifting. The 60 degree hopper walls prevent any wood waste from bridging in this area.

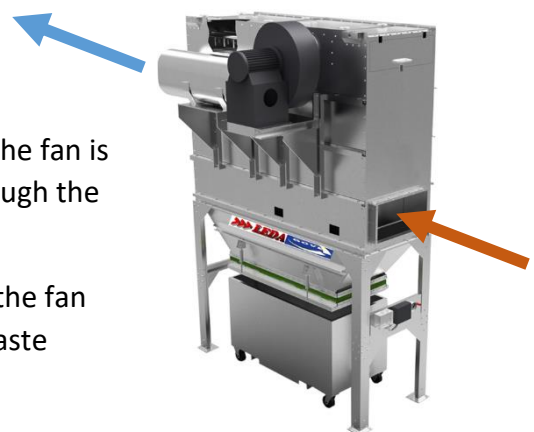
Together these combine to deliver a system ideally suited to the waste flow from a typical Woodworking shop.

No waste passes through your fan

Inevitably your extraction will pick up small offcuts from your CNC nesting and other work.

To deal with this GOVE is a 'clean air' design – where the fan is downstream of the filters so only clean air passes through the fan.

This is significantly quieter and avoids any damage to the fan from offcuts and abrasive wear of the fan blades as waste passes through them.



www.ledamachinery.com.au

>>>LEDA



GOVE LDMY Extractor Series

Designed for the Woodworking Industry

Another important advantage of this system is that the Extractor chamber is under 'negative pressure' (The inside of the extractor is operating at lower pressure than the outside atmosphere). Dust escape is therefore impossible.

The Waste bin is being sucked onto the seal rather than pushed away from it as it. This is the opposite of a dirty air system and ideal for woodworking applications.



No Pleats to fill and clog

GOVE use only smooth wall filter socks not cartridges with pleats which with woodworking are very prone to filling up and blocking airflow through the filters.

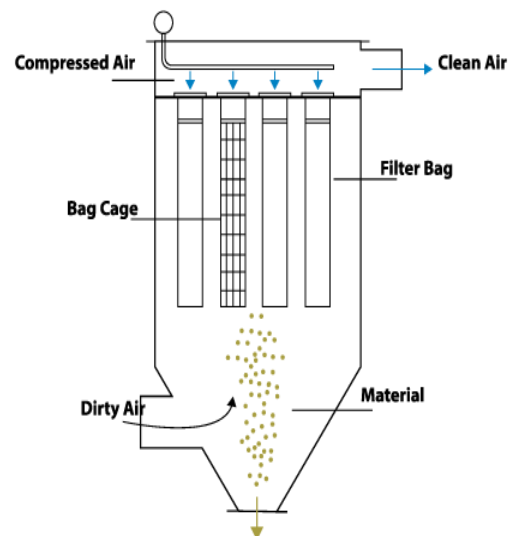


Continuous filter cleaning while you work

GOVE 5 separate banks of filters are cleaned in a cycle with regular, timed blasts of compressed air that create a shock wave down the filter- **cleaning them continually** while your extractor operates. This is far superior to Shaker systems that can only clean when the extractor is shut down so cleaning is irregular and infrequent.

Filter performance drops dramatically between cleans so the continuous cleaning GOVE system maintains filter performance throughout the working day and offers a huge benefit over the inefficient shaker systems.

Woodworking machines have specific airflow volume and pressure requirements and it's important to meet these continuously and only reverse pulse can achieve this. On other systems as filters clogging builds up on the filter surface or in the pleats their resistance to air-flowing through them increases dramatically and what you see back at your machines is a steady and dramatic drop in air volumes.



www.ledamachinery.com.au

>>>LEDA



GOVE LDMY Extractor Series

Designed for the Woodworking Industry



Keeping an eye on your filters for you

GOVE include a Magnahelic gauge – and position this down low enough so you can read it! This measures the pressure differential between the clean and dirty air sides of the filters. So you know if a filter has a hole in it (low difference) or is not clean enough (high pressure difference)

It's then easy to adjust the intensity or interval of the cleaning to match the different dust types and volumes



Lower your maintenance.

Many Woodworking Companies don't work to a planned maintenance schedule. Gove extractors' simple robust construction, low air resistance design and continuous filter cleaning give them an extremely low maintenance requirement.

Happy outside

Many woodwork shops are tight on floor space so having the Extractor outside is a big bonus.

No need to allocate expensive indoor space and forklift access to the Extractor and noise levels inside the factory are reduced.

GOVE extractors are happy outside thanks to thick galvanised construction, sloping rain shedding roof panels, stainless steel fittings and outside rated fan/ motors

The Fan housing is also 'hot dip' galvanised to complete the GOVE's weather protection system



www.ledamachinery.com.au

>>>LEDA



GOVE LDMY Extractor Series

Designed for the Woodworking Industry



Mixed demand allows power savings.



A Woodworking shops extraction demand can vary widely throughout the day as machines are switched on and off.

Your GOVE is supplied as standard with an Inverter which can be connected to an (Optional) Pressure switch in your duct-line.

Together these create a Variable speed drive that automatically recognises this change in demand and adjusts the fan speed to match (much like a car accelerator) Power savings as high as 50% can be achieved and your whole Extraction system runs quieter and smoother.

Another 'big plus' of this system is that it delivers a ramped start up – easy on your electrical system.

The latest energy efficient IE2 motors are fitted to complete your energy savings system



Explosion protection.

Dust in Woodworking shops carries a recognised explosion risk so GOVE include an explosion relief panel in their Woodworking model extractors. This vents any explosion out via this relief panel rather than blowing the extraction chamber apart which is obviously a huge plus.

While explosions are not common they can be triggered by a spark from a tool – not unheard of in any woodworking shop

As an extra precaution GOVE combine this panel with anti-static filter material to avoid generating a spark that could initiate an explosion



www.ledamachinery.com.au

>>>LEDA



GOVE LDMY Extractor Series

Designed for the Woodworking Industry

Large Bin capacity.

Overfilling your bins results in dust storming up into the filter area and causing blockages. It's easy to do this and a real nuisance when it happens – so GOVE's woodworking models all discharge to 1.5 cube dump bins – offering over 6 x the waste capacity of even a larger wheelie bin.

The pneumatic bin seal releases and reseals at the flick of a switch – simple and efficient. Less downtime to empty bins, no overflow problems.

If you prefer Wheelie bins for handling ease or other reasons – there is a 3 bin option.

Compact, neat and tidy and quiet

GOVE models have the fan and motor attached to the extractor frame. This is up high out of harms way but not on top. It can be at the front or rear – so the extractor is a neat and unobtrusive addition to your building – not an eyesore.

With overall height of the 3 models ranging from 4200-5300mm the extractor will also fit inside most modern buildings or outside below the roofline height

An industrial silencer is included as standard and sits neatly within the footprint – keeping things tidy and quiet for your workforce or neighbours

Outstanding value

GOVE LDMY have all the features and design advantages required by the Woodworking Industry. And GOVE pricing is extremely competitive so there is no need to compromise and settle for anything less than a Reverse Pulse cleaning designed and built to meet the unique demands of today's Woodworking shops.



www.ledamachinery.com.au

>>>LEDA



GOVE LDMY Extractor Series

Designed for the Woodworking Industry

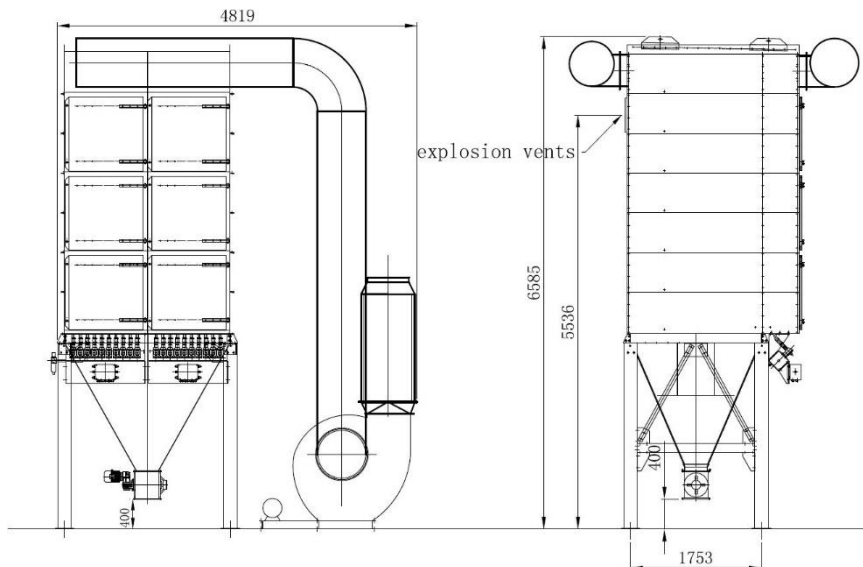
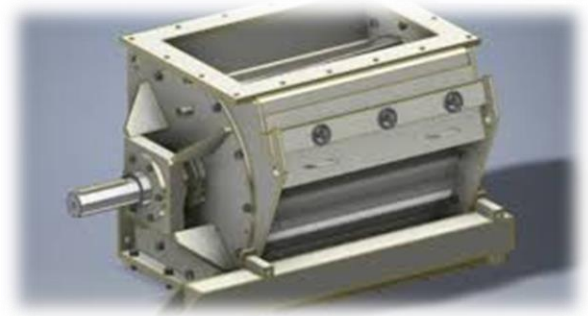


Standard models

MODEL	LDMY45	LDMY60	LDMY75	LDMY100
Fan	7.5kw	15kw	18.5kw	22 kw
Volume c.f.m. at 3000 pascals	4000	6000	7620	9570 at 3500 pascals
Inlet diameter	300mm	400mm	450mm	500mm
Filter area sq. m	45	60	75	100
Variable fan speed	Included	Included	Included	Included
Soft start	Included	Included	Included	Included

Larger volume and models to suit special requirements are built to order.

Rotary valve discharge to a dump bin or conveyor is optional.



www.ledamachinery.com.au

>>>LEDA

